



### CD TRACK 1: TUNING NOTES

Get in tune with Track 1 before progressing on to Track 2 below.



Jazz solo with changes similar to

## 2. Impressions

By Lennie Niehaus

DRUS 1

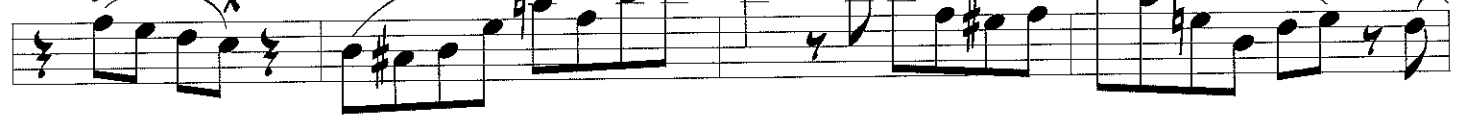
D-7



D-7



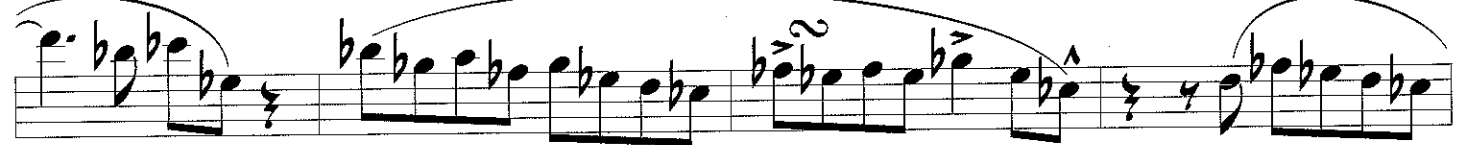
D-7



E<sup>b</sup>-7



E<sup>b</sup>-7



D-7



D-7



## 2. Impressions – Cont.



### CHORUS 2

D-7

D-7

D-7

D-7

E $\flat$ -7

E $\flat$ -7

D-7

D-7